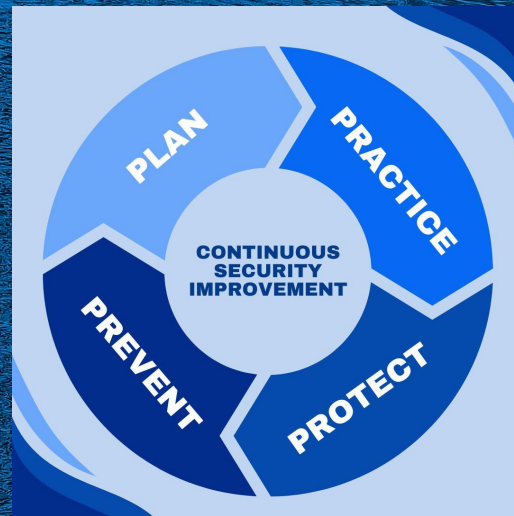


# School Security Overview



**Parent Overview**

**Levittown Schools, Altaris Consulting  
Group & NCPD Homeland Security**





Developing enhancements to district-wide security operations is a major board initiative as outlined in our strategic plan



*Strategic Plan Action Items for 2024-2027 related to security:*

- 2.1| Continue to foster a positive school culture for all students and staff*
- 2.2| Develop enhanced school security protocols to continuously provide the safest possible environment for students and staff*
- 2.3| Review all district communication protocols and provide enhancements where needed to ensure all stakeholders review emergency information as well as regular district updates*

Due to the importance of this topic, the Board of Education directed that a *Parent Information Night* be offered to ensure parents have the opportunity to learn more about our safety and security measures across the district



# CYCLE OF CONTINUOUS SCHOOL SECURITY IMPROVEMENT

## STEP ONE PLAN

Re-evaluate current security measures and identify vulnerabilities and then revise the district security plan that includes policies, emergency procedures, and resource allocation.

## STEP FOUR PROTECT

Continuously monitor security systems and personnel for any breaches or threats. Ensure quick and effective response strategies are in place for emergencies.



## STEP TWO PRACTICE

Conduct regular training sessions and emergency drills for staff and students. After each drill, gather feedback to identify areas for improvement.

## STEP THREE PREVENT

Ensure security protocols, technologies and physical barriers are in place.





**LEVITTOWN  
PUBLIC SCHOOLS**

**DISTRICT-WIDE SAFETY & EMERGENCY  
MANAGEMENT PLAN**  
UPDATED JULY 2024

Not all security enhancements can be discussed in public in order to maintain the safest environment possible for our students and staff.

District-wide Safety Plan:  
<https://www.levittownschools.com/district/ssp/>



# Security Updates 2018-2025

## Physical Facility Enhancements:

- Security evaluation of all buildings by NCPD Homeland Security in 2018 and 2025
- Security evaluation of all building by Altaris Consulting Group in 2022
- Installation of bollards at recommended locations
- Replacement of classroom doors and door locks. Hardened doors installed as well as electronic locks
- Installation of hardened security vestibules at main entrances of all buildings





# Security Updates 2018-2025

## Physical Facility Enhancements Continued:

- Installation of additional interior and exterior security cameras across the district (over 600 installed cameras)
- Creation of district command center
- Installation of air conditioning in all classrooms in order to allow for windows to have stops installed and for interior classroom doors to remain locked and closed
- Interior and exterior classroom numbering; exterior door numbering







# Facility Enhancement: Window Film

Ongoing installation of 3M  
Scotchshield Safety & Security  
Ultra Film installed on exterior  
glass. This is a multi-year  
process that will eventually be  
applied to all first floor exterior  
glass and sensitive interior  
areas.

**Excellent tear-resistant protection and superior solar control with 3M™ Scotchshield™ Safety & Security Window Film Ultra Prestige Series.**

- Combines the benefits of 3M™ Ultra Series with the benefits of 3M™ Prestige Series Window Film
- Tear resistant glass fragment retention film for increased protection of people, property and possessions
- Can be combined with 3M™ Impact Protection Attachment System for additional safety and security
- High visual light transmission providing excellent aesthetics
- Up to 97% infrared rejection providing energy savings and enhanced comfort\*
- Low interior and exterior reflectivity enhances views while maintaining exterior appearance
- Helps extend the life of furnishings by significantly reducing harmful UV rays, the largest cause of fading
- Comprehensive warranty from 3M

Break and Entry	★★★★★
Safety Glazing	★★★★★
Seismic	★★★★★
Blast Mitigation	★★★★★
Visible Light Transmission	★★★★★
Low Reflection	★★★★★
Infrared Rejection	★★★★★

Best ★★★★★  
 Better ★★★★  
 Good ★★★  
 Fair ★★  
 Not Recommended ★

In comparison to other 3M™ Safety & Security Window Films

\*IR Rejection as measured from 900-1000nm

**Ultimate protection and clarity.**

Valued Associations and Alliances:

CLINTON CLIMATE INITIATIVE





## Facility Enhancement:

### Bathroom swipes

At the middle and high school levels, students swipe their ID card to enter the bathroom. This keeps track of individuals utilizing the bathroom.







## Facility Enhancement:

### Exterior Door Alarms

Installed at the elementary level, this allows faculty doors to be alarmed at all times to address young students who may try to leave the building unattended.





# Security Updates 2018-2025

## Security Protocol Enhancements:

- Implementation of building visitor protocol (ScholarChip)
- All staff members are required to wear their district ID on a district lanyard so that it is visible to everyone
- All MS & HS students are required to wear their district ID on a district lanyard so that it is visible to everyone
- Creation of single point of entry
- Enhanced and ongoing SHELL training for all staff by security consultants. SHELL stands for: “Shelter-in-Place”, “Hold-In-Place”, “Evacuate”; “Lockout”; “Lockdown”
- Annual tabletop exercises in each building related to various security situations
- Ongoing drills with students at different times of the day (lunch, recess, physical education class, etc.)





# Security Updates 2018-2025

## Security Protocol Enhancements Continued:

- Development of enhanced parent reunification procedures in case of student evacuation
- Emergency flip charts available in all classrooms
- RAVE app available to all teachers
- Annual RAVE testing
- During school days, all exterior doors remained locked

## Security Personnel Enhancements:

- Hiring of additional security aides (approximately 65 district-wide)
- Hiring of a full-time dedicated Security Coordinator and security consulting firm (Altaris Consulting Group)
- Creation of Threat Assessment Teams at each building





## Protocol Enhancement: After-School Activities

The district safety plans were enhanced to include specific security protocols for use before and after school and on weekends.





# Security Updates 2018-2025

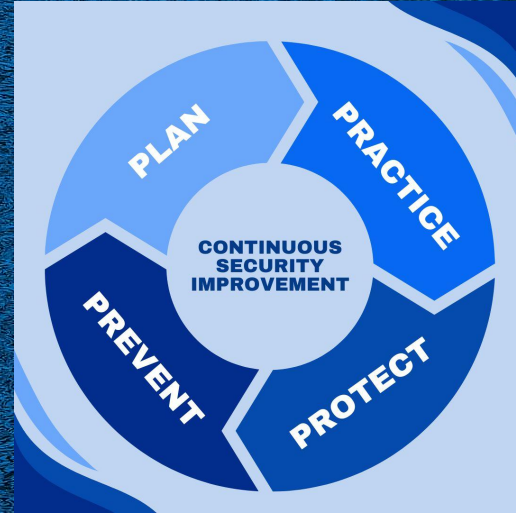
## Security Communication Enhancements:

- Upgraded district communication platform to Parent Square
- Creation of district emergency protocol document for annual distribution to parents
- Creation of online reporting system (not anonymous)
- Development of digital library of message templates for emergencies
- Implementation of weekly security roundtable meetings for district administrators
- Increased communication with parents districtwide when security incidents occur
- Biannual safety and security updates to the Board of Education





# Upcoming Enhancements

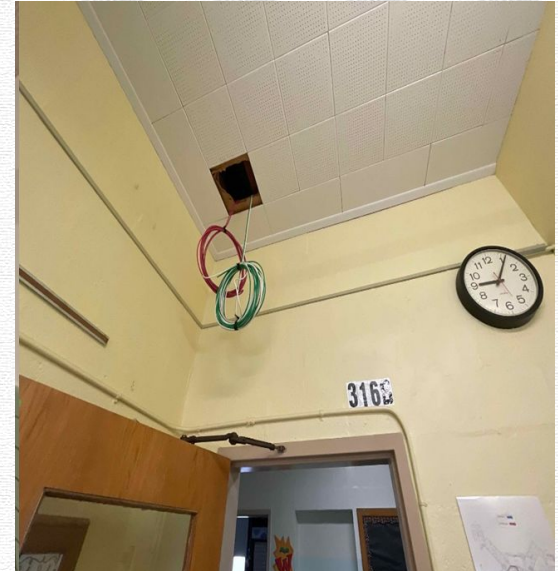




# Public Address System, Fire Alarms, One-Button Lockdown System, Door Sensors and Cameras:



The district has begun the process of installing infrastructure for our new public address system, fire alarm systems and one-button lockdown systems in all buildings. Door ajar sensors are also being installed as well as additional cameras throughout the district.





# Anonymous Reporting System

Starting this Spring, LPS will partner with Sandy Hook Promise on a new anonymous reporting system as well as on a new curriculum focused on teaching students about the importance of sharing concerning information with a trusted adult.

A screenshot of a web-based anonymous reporting form for Levittown Public Schools. The form is titled "LEVITTOWN PUBLIC SCHOOLS TIP LINE" and includes a disclaimer at the top: "This site should not be used to report on immediate threat or danger or to call law enforcement around the clock. If you require emergency assistance, please dial 911. Read to Contact the Sussex County Police Department." Below this, there are several input fields: "FIRST NAME", "LAST NAME", "ADDRESS", "CITY", "STATE" (with a dropdown menu), "ZIP" (with a dropdown menu), "PHONE NUMBER", and "E-MAIL ADDRESS". There is also a "BUSINESS" checkbox. A large text area labeled "DESCRIPTION" is at the bottom, with the instruction "Please describe any suspicious behavior below." A "SUBMIT" button is located at the very bottom of the form.



# Proposed New Command Center at LMEC



*Sample Command Center*



# LPS Security Partners and Their Roles



- Security Coordinator
- Altaris Consulting Group
- NCPD Homeland Security
- NCPD POP Unit



# Responding to Threats



1. Potential threat received
2. Immediate safety assessment made: Lockout, Hold-In-Place, or Lockdown may be initiated to ensure student and staff safety
3. Police notified/District Security Coordinator notified/District Administration notified
4. Investigation begins. May include student and staff interviews, searches of personal items, lockers, facilities



## Responding to Threats



5. Depending on the outcome of the investigation, NCPD may recommend emergency care, conduct a house visit, and/or make an arrest of any involved parties
6. Consequences applied as per Code of Conduct and mental health support offered if appropriate
7. Notification to parents and staff (Parent Square)
8. Threat Assessment Team meets to make report



# Questions

- **Where are the cameras located?** *The district has installed over 600 cameras throughout the district including in hallways, cafeterias, lobby areas as well as outside. Law prohibits the installation of cameras in bathrooms.*
- **What kind of security training does the staff and students go through?** *Staff members receive SHELL training each year. All students are required to participate in a minimum number of Lockdown drills each year. They also participate annually in an Emergency Sheltering Drill and Rapid Dismissal Drill. Additionally, Emergency Team Members in each building participate in additional training such as tabletop exercises, Lockdown drill reviews, and initial Incident Command System training.*





# Questions

- **What are the district protocols if ICE visits the building?** *The district has developed written protocols with our attorneys and Nassau BOCES to ensure we follow the law in regards to visits from ICE. ICE representatives who visit the building would need to provide official documentation which would then be vetted by district legal counsel before entry. This will ensure that all applicable laws are followed. Parents will be notified if ICE either enters the building or attempts to enter the building. These protocols have been reviewed with building administrators at our weekly security meetings. Our agreement with Altaris provides us with ongoing updates regarding this topic and other security issues across the state and the nation.*





# Questions

- **What is the district's relationship with Homeland Security when they are in the building?** *The district has maintained an extremely positive relationship with the Nassau County Police Department over the past decades. Whenever we have had a security issue, they have immediately responded. Many of the contacts in the department either live in the community or are graduates of our schools. When they are in the building it is a collaborative relationship where we discuss what's in the best interest of students. Of course in a situation where the building is in a lockdown, the building can only be released by NCPD. This is for safety reasons.*





# Questions

- **What are students taught if there is a lockdown and they are outside the classroom?** *Students are taught to go into the nearest room. This could be another classroom, a bathroom, a closet, etc. Teachers with classrooms closest to bathrooms are trained to check the bathroom at the immediate onset of a lockdown. Teachers also have attendance protocols that are used in a lockdown to indicate to administration and police if they have all of their students, are missing students, or have additional students.*





# Questions

- **What security protocols are used on buses?** *Bus drivers are trained that if a school is in lockdown and they are arriving with students, they are to re-route back to their place of origin or LMEC. All buses are equipped with multiple interior cameras to assist with the identification of security threats. All buses have communication devices so that they can communicate directly with the Transportation Depot. Several years ago our transportation department went through a rigorous security evaluation with the Department of Transportation, one of the first on Long Island to do so. We are working with Altaris to determine if there are additional best practices to consider implementing.*





# Questions

- **How does our district compare to other local districts when it comes to the number and type of security incidents? And again within the country? How do this year's security threats compare to previous years?** *While data isn't available in regards to comparing districts, in discussions with NCPD, Altaris and other districts across Long Island, our incidents are similar to others. Security threats have been on the rise over the past 5 years. When appropriate, we have been notifying all district parents regarding incidents that occur, even if it is not in a building attended by their children which may give the appearance of an increase.*





# Questions

- **What proactive measures are being taken in our district to prevent serious acts of violence? How does this compare to other local districts?** *The district has invested heavily in mental health supports, similar to many other districts. Research indicates that proactive mental health supports actually are the most effective form of violence prevention in schools. We also continue to promote the concept of 'see something, say something' with our staff and students, encouraging everyone to report concerns before they escalate into more serious issues. We will be implementing a curriculum on this topic next year.*





# Questions



- **How are substitute teachers and new employees in our district being educated about emergency preparedness procedures? Are they being made aware of the evacuation plan, lockdown/out procedures, etc. of each school prior to working their first shift?** *Substitutes are made aware of the safety protocols used in the district prior to working in our schools. We also provide information in the substitute folders as well as in every classroom in the district. This is an area we are currently enhancing to provide more in-depth training.*



# Questions

- **Has our district, or surrounding districts considered or implemented any form of proactive safety audits of the buildings?** *Yes. We have had audits done by NCPD Homeland Security in 2018 and 2025 as well as by Altaris in 2022.*





# Questions

- **Are there any considerations for an armed official being present in our buildings?** *There are regular safety updates made to the Board of Education in public session where our current measures are discussed as well as potential enhancements. The Board of Education continuously discusses all possible safety enhancements for our schools (including armed security). The goal is to strike a balance between creating an inviting educational environment for learning and implementing effective safety measures for both students and staff.*





# Questions

- **Can you please provide in detail if and how security guards will be armed? What kind of weapons, how many weapons will be in the school and where the security guards will be positioned, if the weapons will be visible to students etc.**  
*We currently do not have armed security. As discussed at previous Board of Education meetings this year, the district is reviewing our security measures to determine if additional enhancements are appropriate and what they would be. This review includes examining feedback from our security consulting firm, NCPD, surrounding districts, and future survey feedback from parents, staff and students.*





# Next Steps:



- 1- If you have additional questions, feel free to email us at [securityfeedback@levittownschools.com](mailto:securityfeedback@levittownschools.com)
- 2- LPS will be sending a security survey to all parents, students and staff members next month. The more individuals who respond, the more information we'll have to plan our future security enhancements